



**City of Mesa  
Parks and Recreation Advisory Board  
Agenda**

DATE: Wednesday, May 11, 2022  
TIME: 5:00 PM  
LOCATION: 708 W Baseline Road Bldg. #4, Board Room, Mesa, AZ

BOARD MEMBERS: Chair Nycole Leyba; Vice-Chair Claud Cluff; Board Members Troy Campbell; Kimberly Forest; Robert Ingram; Brent Maldonado; Jo Martin; Jacob Martinez; Orchidia Peterson; and Amelia Romney

**1. CALL TO ORDER**

**2. ROLL CALL**

**3. APPROVAL OF THE MINUTES**

Approve the Regular Meeting Minutes of March 9, 2022 meeting

Board Action: Discussion and action (roll call vote)

**4. PUBLIC COMMENTS**

The public is welcome and encouraged to speak at Mesa Parks and Recreation Advisory Board (Board) regular meeting on either an item on the agenda or to comment on an issue that is not specifically on the agenda. The public may attend and participate in person.

White speaker/comment cards are available to the public and should be filled out prior to the meeting, and then given to the Board Liaison. Those wishing to speak have the choice either to have their comments read aloud or to speak on the matter directly. Speakers: if you choose to speak, your name will be called, and you will be asked to come forward to speak. Comments are limited to 3 minutes per speaker.

**5. FY 22/23 BUDGET PRESENTATION**

Review the presentation on the [Parks, Recreation and Facilities Fiscal Year 2022/2023 budget](#).

Board Action: None

**6. MASTER PLAN PRESENTATION OF FINDINGS**

Teresa Jackson, Senior Consultant at BerryDunn, will give a presentation with an overview of the Parks, Recreation and Community Facilities Comprehensive Master Plan findings.

Board Action: None



**7. DIVISION UPDATES**

**8. DIRECTOR'S UPDATES**

**9. REPORTS OF MEETINGS OR EVENTS ATTENDED**

**10. NEXT MEETING**


The next meeting will be held on July 13, 2022.

**11. ADJOURNMENT**



**ACCESSIBILITY:** The City of Mesa is committed to making its public meetings accessible to persons with disabilities. For special accommodations, please contact the Board Liaison at 480-644-2269 or AZRelay 7-1-1 at least 48 hours in advance of the meeting. Si necesita asistencia o traducción en español, favor de llamar al menos 48 horas antes de la reunión al 480.644.2269.



	<p style="text-align: center;"><b>Parks and Recreation Board Report</b></p> <p>Date: May 11, 2022 From: Andrea Moore, Director Subject: Master Plan Presentation of Findings</p>	<p>Agenda Item: 6</p>
-----------------------------------------------------------------------------------	----------------------------------------------------------------------------------------------------------------------------------------------------------------------------------------------	-----------------------

### **Purpose**

Consultant for the City of Mesa, BerryDunn (previously GreenPlay) will present an overview of the Parks, Recreation and Community Facilities Comprehensive (PRCF) Comprehensive Master Plan findings (Attachment A) that have been generated through public input and agency analysis to date. No formal action from the Parks and Recreation Advisory Board is needed at this time and discussion and questions are encouraged.

### **Background/Discussion**

In May 2021, in an effort to update the PRCF Comprehensive Master Plan, the City hired consulting firm GreenPlay. In September 2021, a series of public meetings, stakeholder interviews, and focus groups took place to gather baseline information about the community's priorities and perspectives toward the facilities and services provided by the department. Additionally, in November 2021, the department sent out a citizen survey to gather statistically valid responses in ranking and evaluating the department's offerings to the community. Finally, an in-depth analysis of facility and program inventory has occurred with the consultant team.

On January 10, 2022, GreenPlay merged with the BerryDunn consulting firm. The BerryDunn team, led by Teresa Jackson, is ready to present an overview of their preliminary findings (Attachment A) for feedback from the Parks and Recreation Advisory Board and community. This information will ultimately create the foundation for action items and recommendations to include in the final Master Plan document. Presentation of the draft PRCF Comprehensive Master Plan document is planned for the July 2022 Parks and Recreation Advisory Board meeting. Presentation to and adoption by the City Council is planned for September 2022.

In November 2024, the City will ask Mesa voters to approve the next 10-year General Plan on the election ballot. Currently, the City's Development Services Department is leading the update of the City's General Plan. After the PRCF Comprehensive Master Plan is an approved document, it will be incorporated into the City's updated General Plan, just as the PRCF's prior plan is now in the City's 2040 General Plan.





# PRCF Comprehensive Master Plan





## Agenda

- ▶ Community Demographics
- ▶ Community Engagement
- ▶ Survey Results
- ▶ Inventory and Level of Service
- ▶ Comparative Analysis (Budget and Staffing Levels)



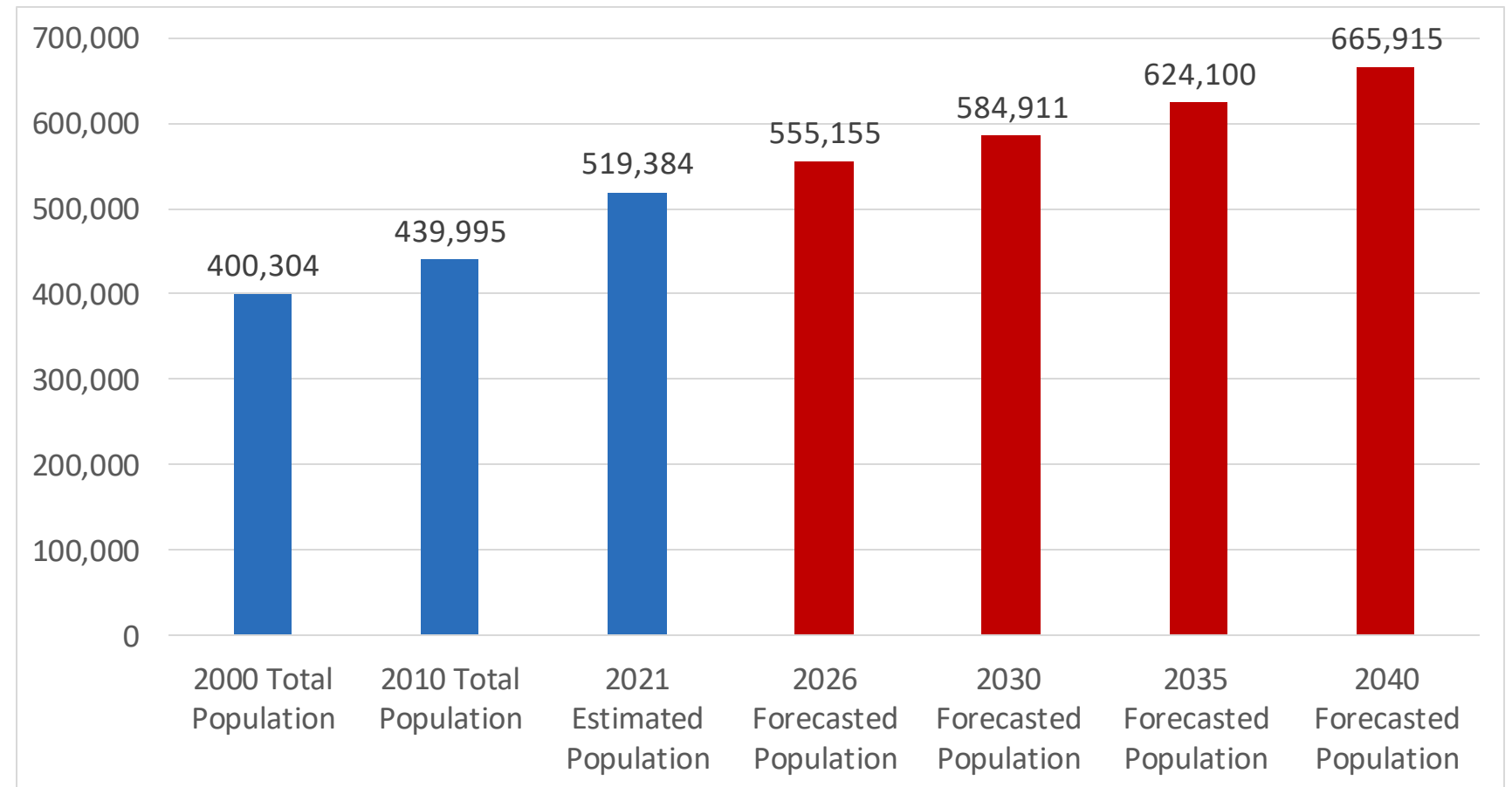
# Community Demographics

519,384  
Population

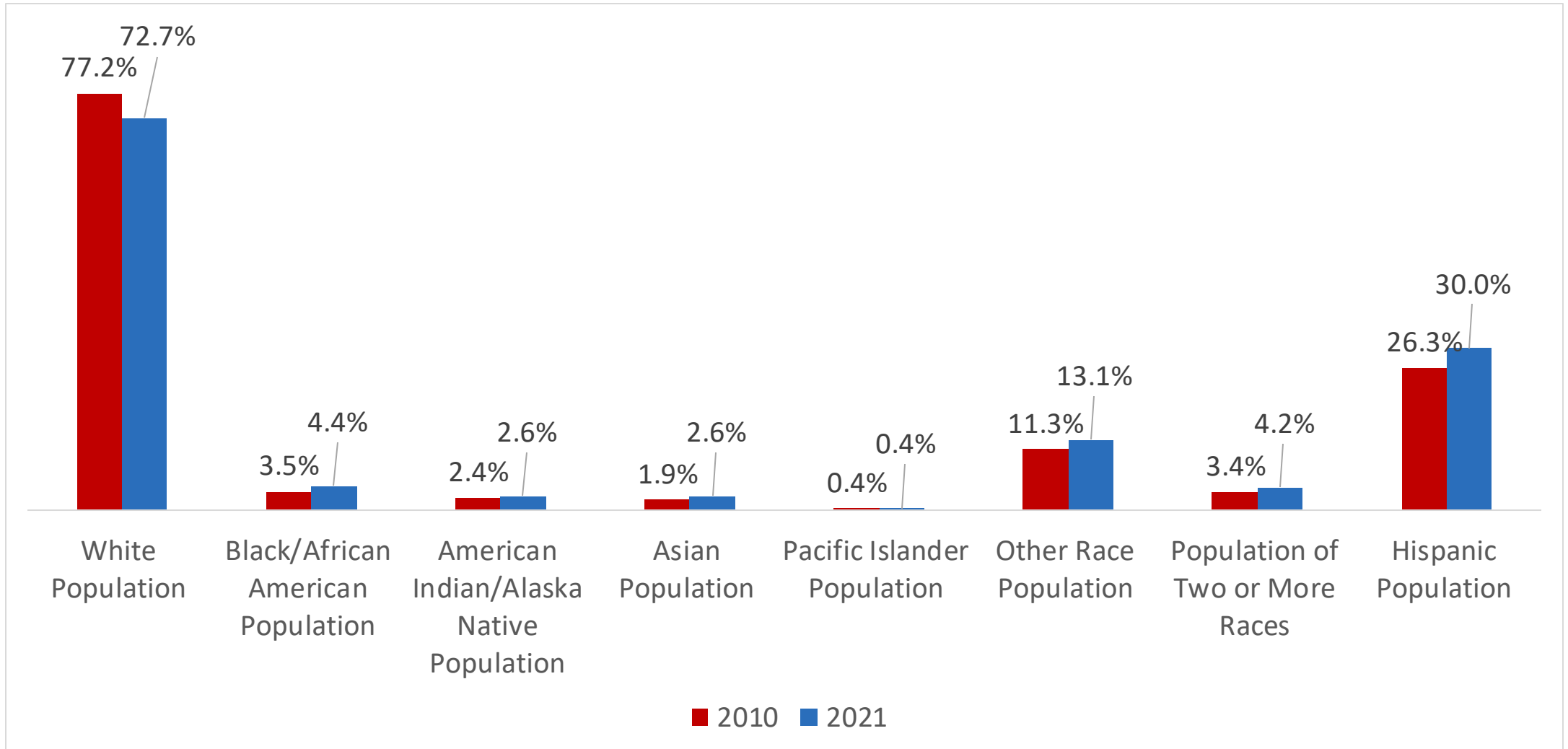
36.6  
Median Age



12.6%  
Live with a Disability











## Community Engagement:

- ▶ 8 Stakeholder Interviews
- ▶ 2 Focus Group Sessions (13)
- ▶ 6 Community Workshop Series (127)
- ▶ Statistically Valid Survey (2,402)





**Workshop One:**  
Brimhall Aquatics Complex

**Workshop Two:**  
Mesa Aquatics, Parks & Sports Field Maintenance

**Workshop Three:**  
Hale Elementary School

**Workshop Four:** Eastmark Community Center

**Workshop Five:**  
Eagles Community Center

**Workshop Six:**  
Dobson Library





# Key Findings from Community Workshop Series



## **Recreation Needs and Priorities**

Recreation  
center fitness  
programs



## **Indoor Amenities: Importance**

Multi-activity  
gym, Group  
exercise  
room(s)



## **Park Needs and Priorities**

Walking, hiking,  
biking trails and  
pathways



## **Outdoor Amenities: Importance**

Playground  
Shade,  
Bathrooms



## **Budget Priorities**

Repairing and  
maintaining  
existing parks  
trails and  
facilities

Building new  
trails



## **Increased Future Use**

Better  
condition and  
maintenance of  
parks and  
facilities

An Increase in  
indoor  
programs



# Survey Results

2,402

Total  
Surveys



284

Invitation Online and Paper  
surveys completed  
+/- 5.8% Margin of Error



2,118

Open Link Surveys Completed





### **Satisfaction**

On a scale of 1 to 5, about three-quarters of respondents rated their current satisfaction with parks and recreation facilities a 4 or 5, for an average score of 4.0. Programs and services rated slightly lower at 3.6



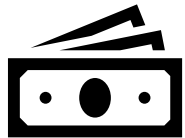
### **Future Facilities, Amenities and Programs**

The top priorities for respondents are to fix/repair/update existing facilities, add more shaded areas, purchase land to preserve open space, and develop new walking/biking trails. New dog parks, sports fields and skate parks are of less importance.



### **Values and Vision**

There is preference for respondents to maintain current facilities rather than build new amenities.



### **Financial Choices**

A total of 55% of respondents supported a new bond programs to expand Parks and Recreation as their first or second choice out of four funding options.





# Inventory and Level of Service

- ▶ Parks
- ▶ Trails
- ▶ Pools
- ▶ Indoor Facilities



# Inventory Site Visits

- Overall parks are in good condition and well maintained
- Signage is fairly consistent across system
- Some access and ADA issues
  - tables on concrete pads in the middle of turf areas
  - fencing around horseshoe pits
- Playgrounds
  - Most have shade structures
  - Address sand as safety surfacing at some playgrounds
  - Yellow/tan plastics seem to do better in sun than green/blue/red
- Some sport courts are showing aging surfaces and will need updates
- Formalize trailheads at parks
- Opportunities to reduce turf

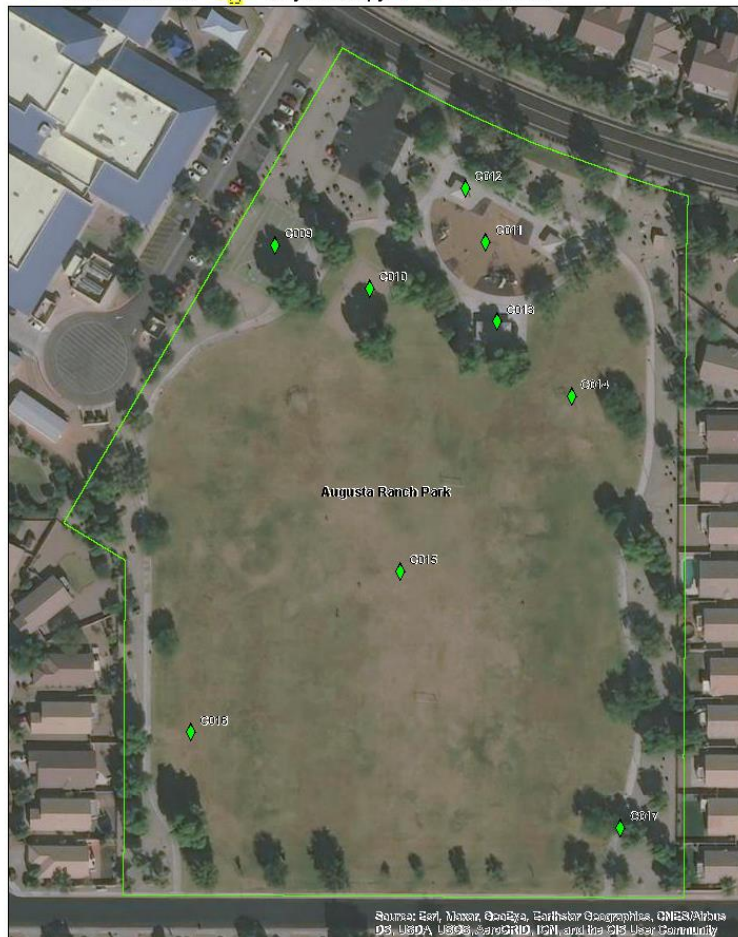




## Augusta Ranch Park



- ◆ Components
- ✚ Indoor Facilities
- Locations
- 📍 CityLimitCopy
- 🚶 Park Paths
- 🚲 Bike Lanes



Source: Esri, Maxar, GeoEye, Earthstar Geographics, CNES/Airbus DS, USDA, USGS, AeroGRID, IGN, and the GIS User Community

## Augusta Ranch Park

Initial Inventory Date: 9/3/2021

52.8 Total Neighborhood GRASP® Score 62.4 Total Community GRASP® Score

Approximate Park Acreage: 10.1  
Owner: Mesa

Drinking Fountains	2	Shade	2	<b>Design and Ambiance</b>	<b>2</b>
Seating	2	Trail Connection	0		
BBQ Grills	2	Park Access	2		
Dog Pick-Up Station	2	Parking	2		
Security Lighting	2	Seasonal Plantings	0		
Bike Parking	2	Ornamental Plantings	2		
Restrooms	0	Picnic Tables	2		

## General Comments

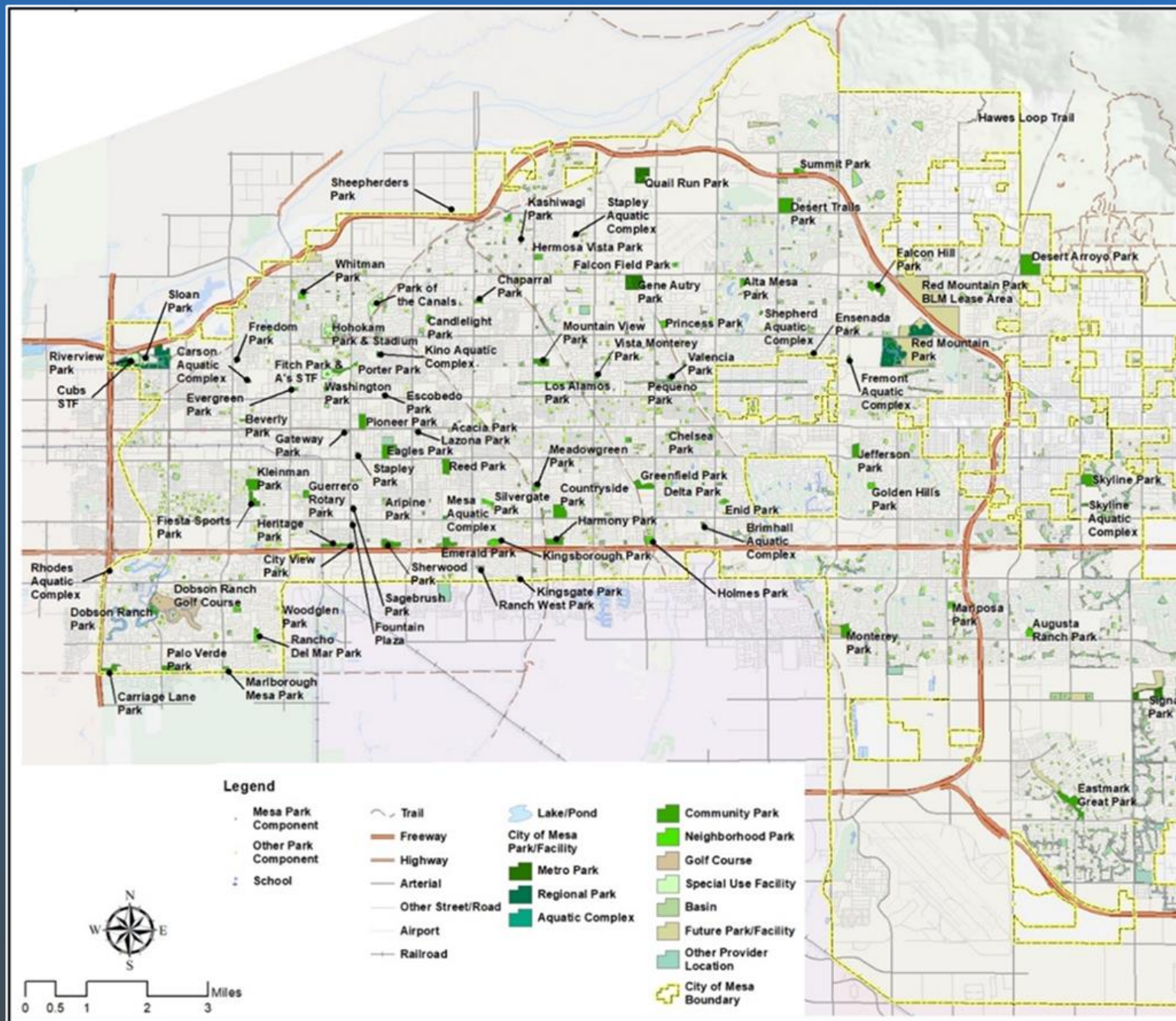
Neighborhood park with large trees and some perimeter ornamentals

## Components with Score

MAPID	Component	Quantity	Lights	Neighborhood Score	Community Score	Comments
C009	Basketball Court	1	Y	2	2	Large perimeter trees help shade the court
C014	Diamond Field, Practice	2		2	2	
C017	Loop Walk	1		2	2	
C016	Open Turf	1		2	2	
L027	PARCEL	1		2	2	
C011	Playground, Local	1		2	2	EWf and PIP. Older equipment
C015	Rectangular Field, Multiple	1		2	2	Practice field
C013	Shelter, Large	1		2	2	
C012	Shelter, Small	2		2	2	
C010	Volleyball Court	1	Y	2	2	Sand volleyball court. Large perimeter trees help shade the court

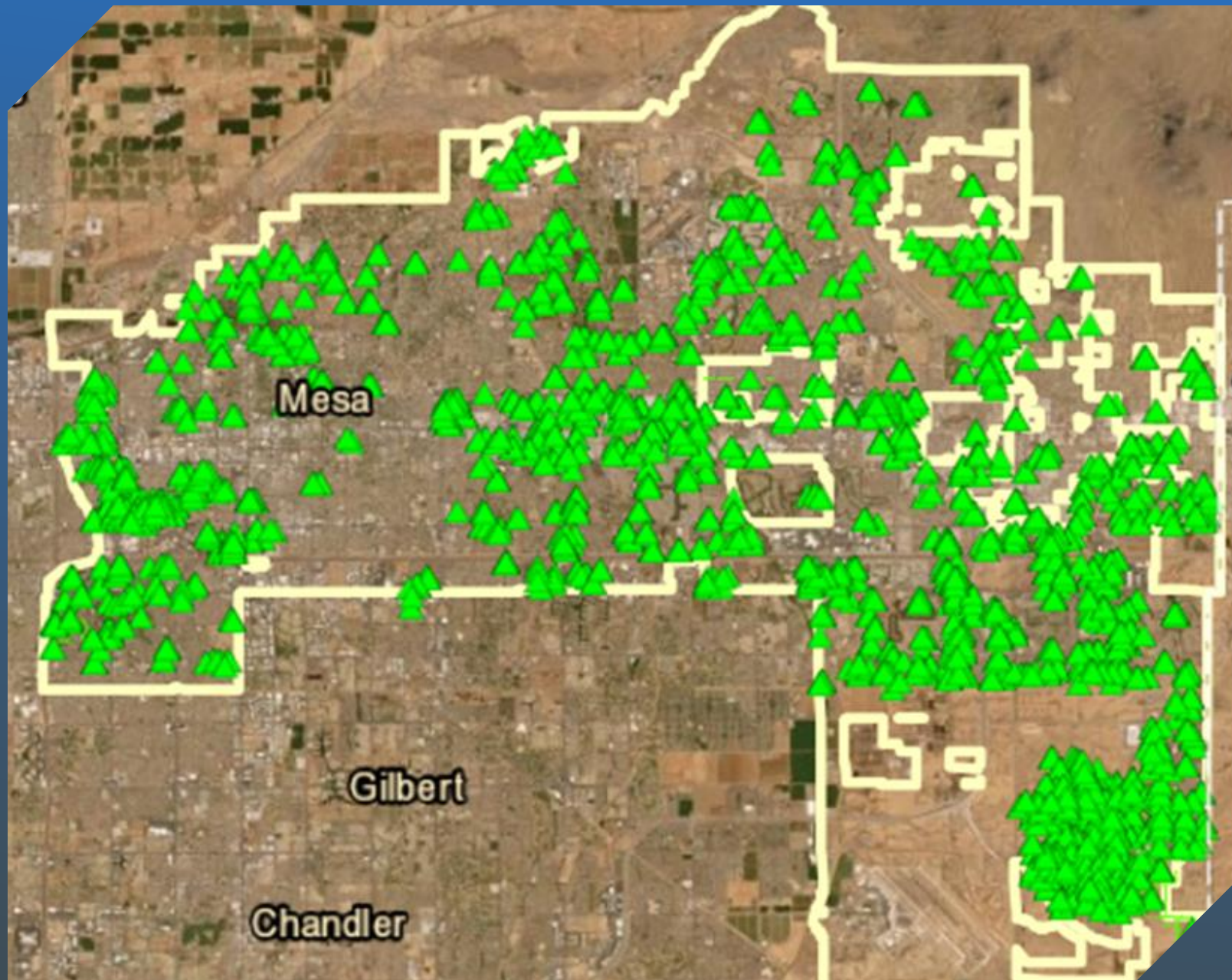
Mapping Location  
and Quality of  
Components





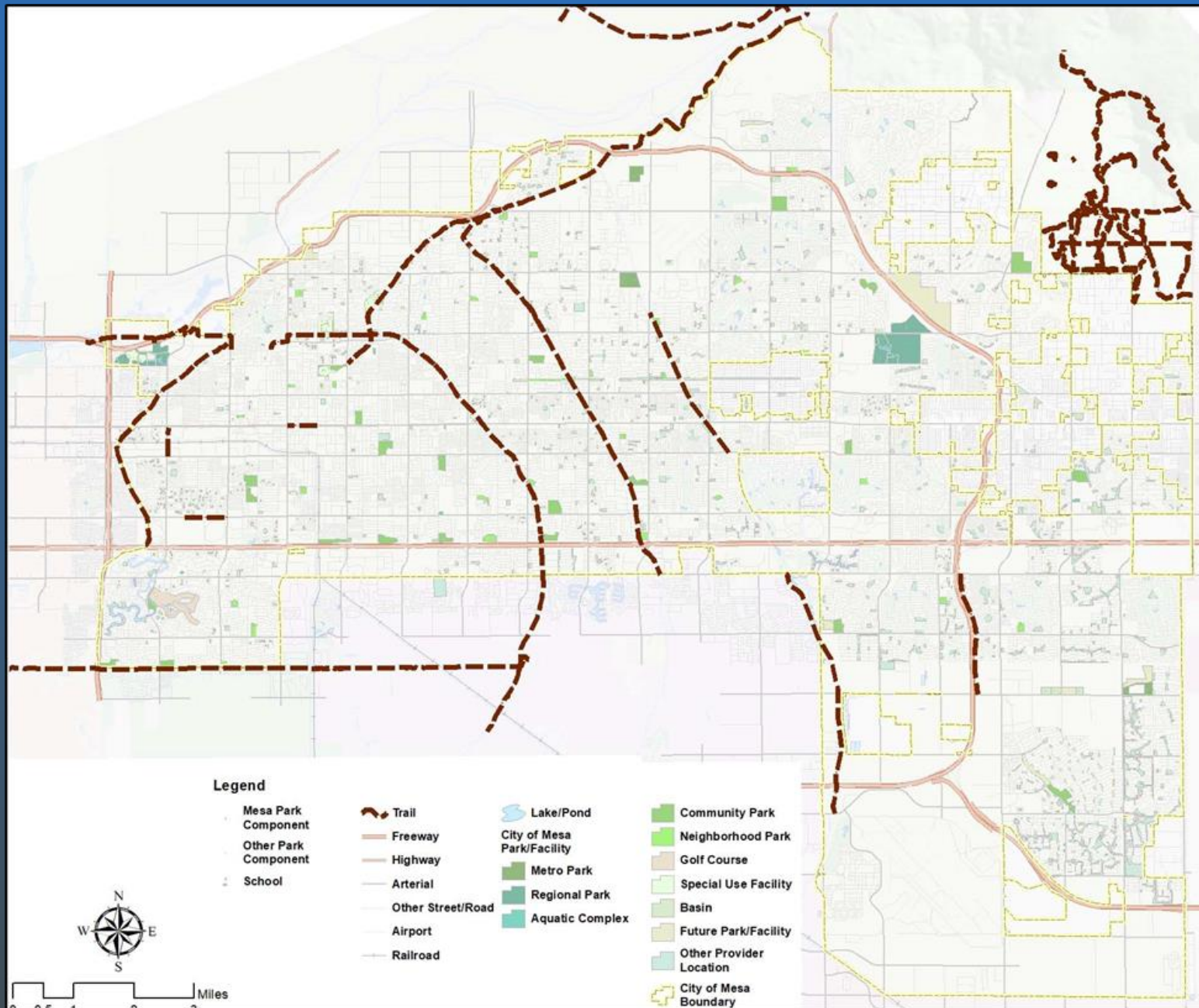
## The Mesa System





Alternative  
Providers





## The Trails System



Outdoor Facility	Agencies offering this facility	Similar Agency Residents per Facility	Mesa Residents per Facility	Mesa 2021 Quantity	Need to add to meet current population	Facility needed to meet 2027 projected population
Residents Per Park	N/A	5,765	6,040	86 parks	N/A	N/A
Acres of Park Land per 1,000 Residents	N/A	10.6	3.1	1,615 Acres	N/A	N/A
Basketball Courts	87%	11,632	10,185	51	-7	-7
Community Garden	48%	96,322	519,443	0	5	5
Diamond Fields: Adult Baseball	51%	48,657	11,052	47	-36	-36
Diamond Fields: Adult Softball	65%	30,511			-33	-33
Diamond Fields: Youth Baseball	78%	19,286			-25	-25
Diamond Fields: Youth Softball	59%	44,398			-35	-35
Dog Park	65%	129,506	173,148	3	1	1
Pools	51%	93,534	51,944	9	-4	-4
Tennis Courts	81%	9997	27,339	19	32	32
Playgrounds	94%	8,271	8,116	64	-2	-2
Rectangular Fields: Adult Soccer	44%	30,092	23,611	22	1	1
Rectangular Fields: Multi-purpose	66%	22,538			-5	-5
Skate Park	39%	247,664	519,443	1	1	1

Comparison based on median for 250,000+ population comparison

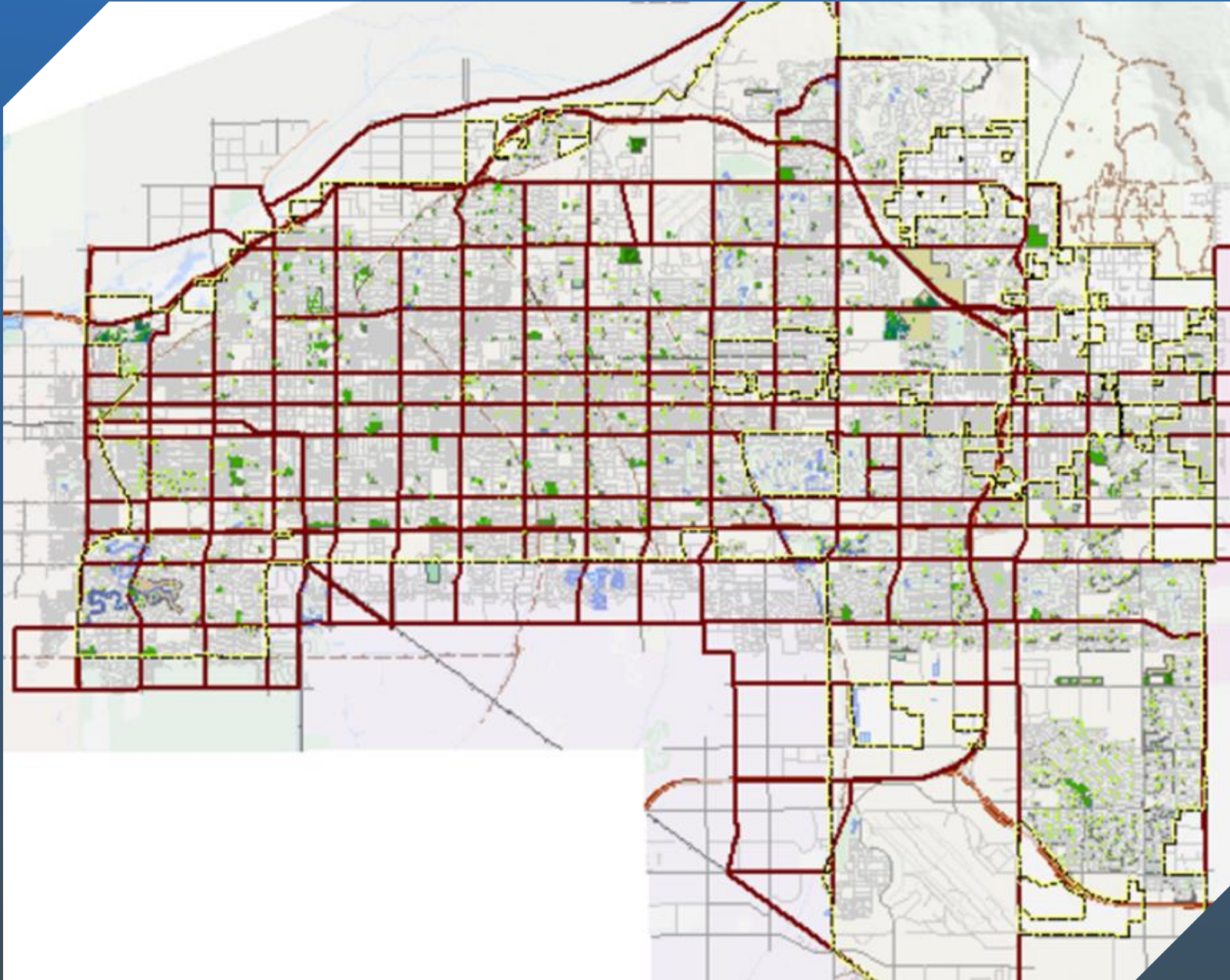
Exceeds median

Does not meet median

\*\*Diamond filed inventory simplified into all diamond fields or practice diamond

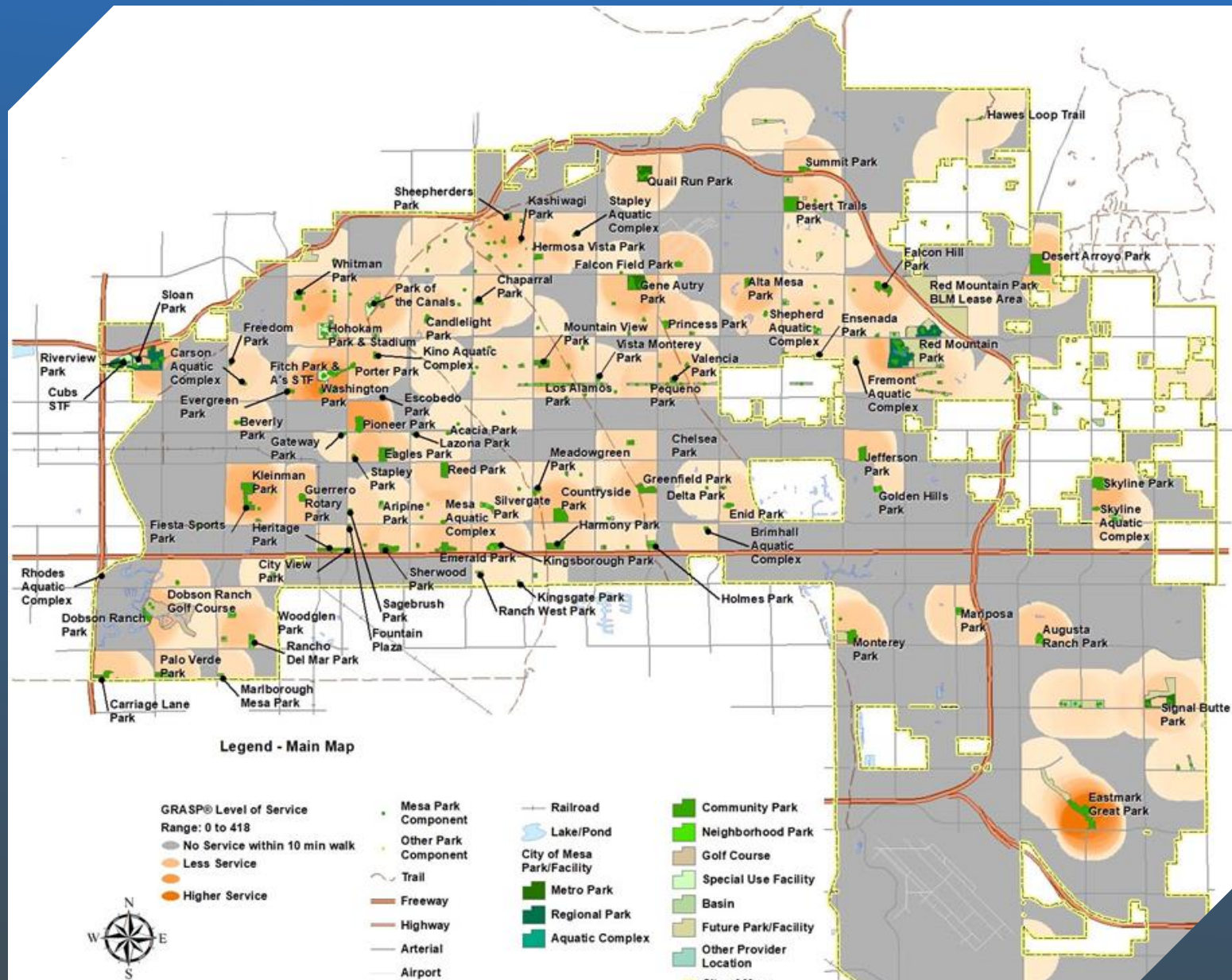
\*\*\*Only large rectangle fields used in this calculation





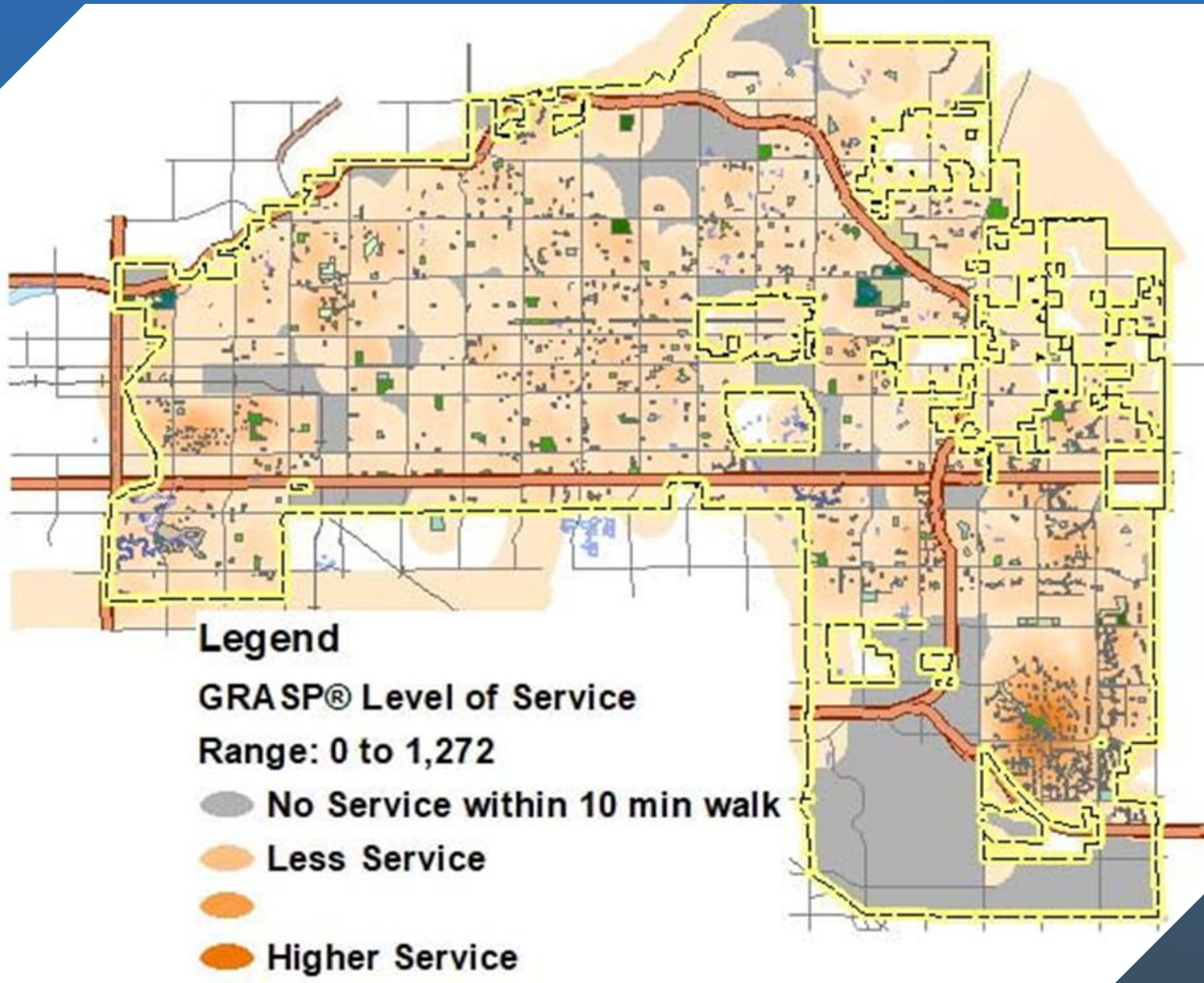
## Pedestrian Zones





# GRASP® Walkable Access Mesa Only





GRASP® Walkable  
Access  
All Providers

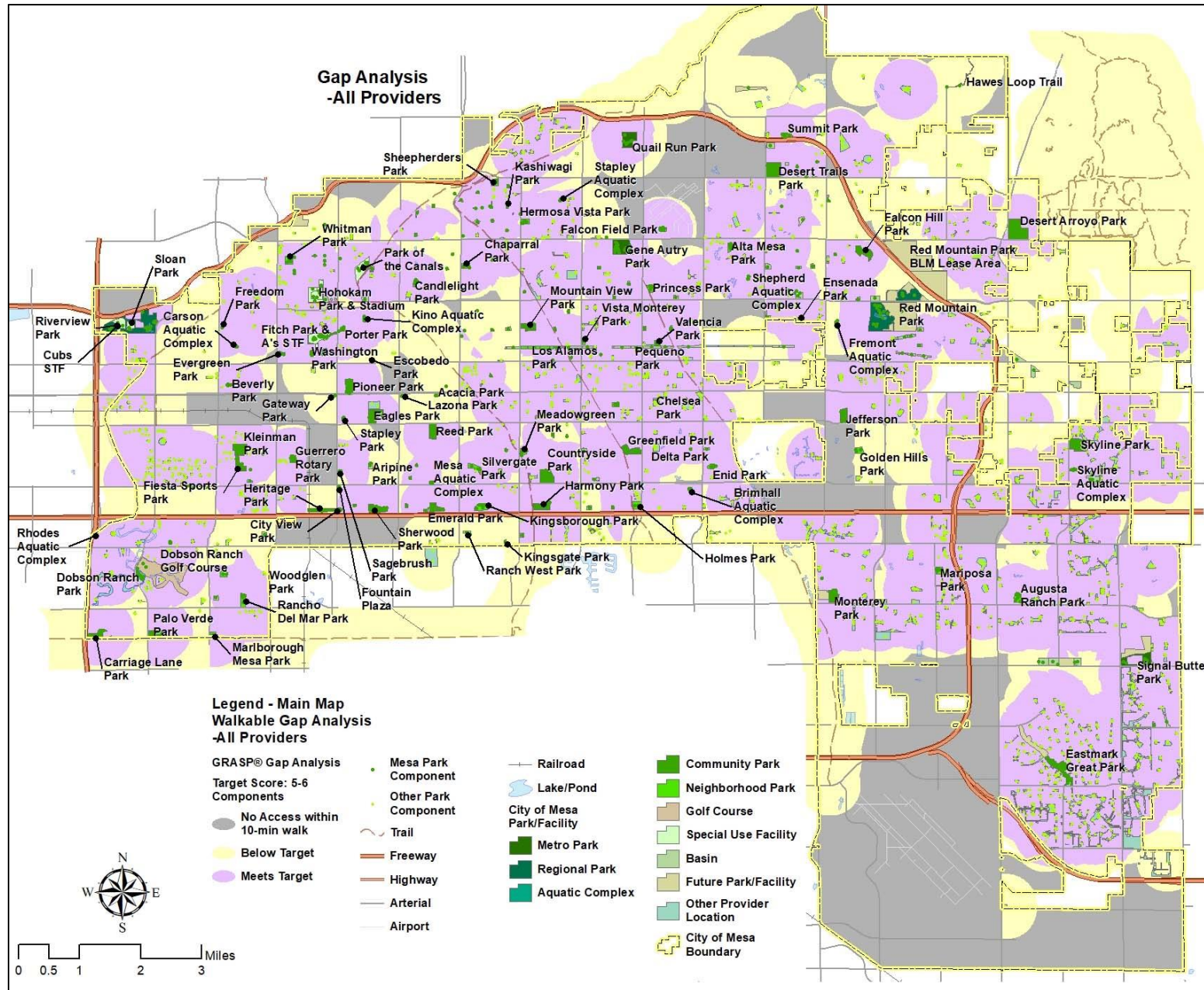


# GRASP® Walkable Access

What should everyone have access to?

Park	Acres	Basketball Court	Fitness Course	Horseshoe Court	Loop Walk	Open Turf	Playground	Small Shelter	Volleyball Court	Total Components	Component Diversity
Chaparral Park	5.8	2		1		1	1	1		6	83%
Enid Park	6.1	1				1	1	2	1	6	83%
Mariposa Park	8.3		1		1	1	1	1		5	100%



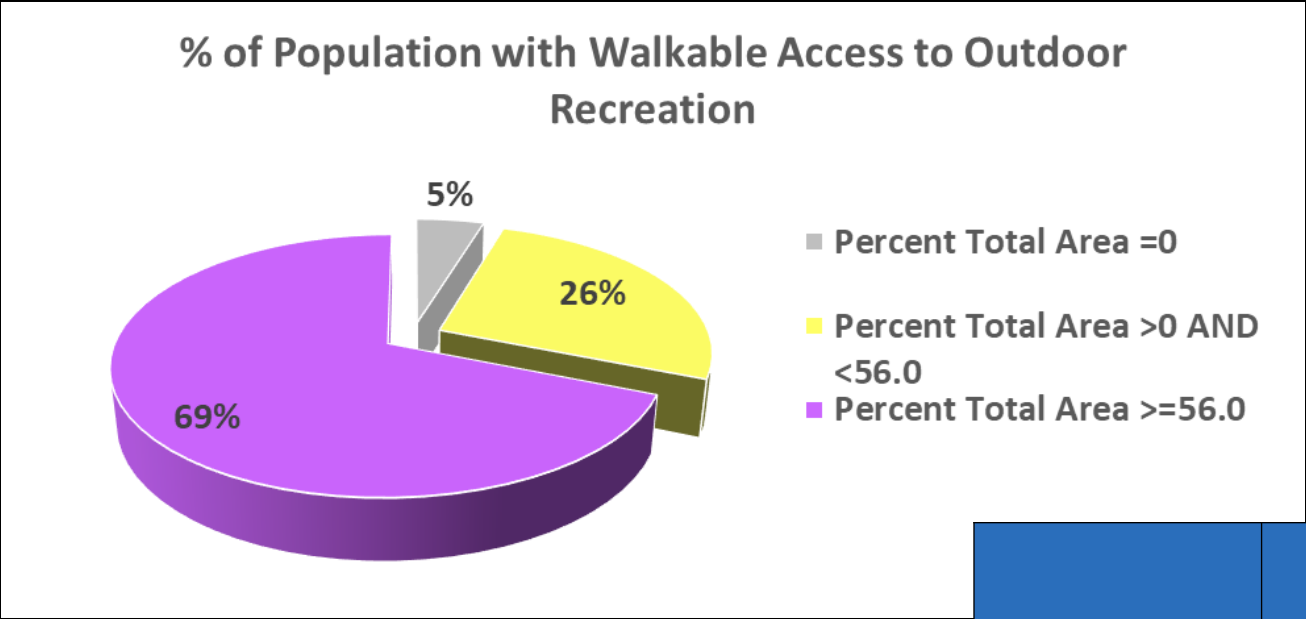


# GRASP®

## Walkable Target



# GRASP® Walkable Access



Walkability Demographic Analysis	% of 2021 by Service Level	Median Household Income	Diversity Index	Crime Index
No Service	5%	\$52,124	79.3	126
Low Service	26%	\$60,670	75.5	97
Target	69%	\$61,302	70.3	94



This product is for informational purposes and may not have been prepared for, or be suitable for legal, engineering, or surveying purposes. Users of this information should review or consult the primary data and information sources to ascertain the usability of the information. Map Produced for Mesa, AZ, by the GRASP® Team. Please refer to the project document for map details and narrative. Legend elements may vary in size, color and transparency from those shown on the map. GIS data sources include: City of Mesa GIS, Maricopa County, GRASP® Team, Esri. © Copyright Mesa 2022

### Gap Analysis -All Providers

#### Legend - Main Map Neighborhood Gap Analysis -All Providers

GRASP® Gap Analysis  
Target Score: 5-6  
Components

- No Access within 1-mile
- Below Target
- Meets Target

Mesa Park Component  
Other Park Component  
Freeway  
Highway  
Arterial  
Airport

Railroad  
Lake/Pond  
City of Mesa Park/Facility  
Metro Park  
Regional Park  
Aquatic Complex

Community Park  
Neighborhood Park  
Golf Course  
Special Use Facility  
Basin  
Future Park/Facility  
Other Provider Location  
City of Mesa Boundary

### Neighborhood LOS -Mesa Only

#### Legend

GRASP® Level of Service  
Range: 0 to 575

- No Service within 1-mile
- Less Service
- Higher Service

### Neighborhood LOS -All Providers

#### Legend

GRASP® Level of Service  
Range: 0 to 845

- No Service within 1-mile
- Less Service
- Higher Service

### Gap Analysis -Mesa Only

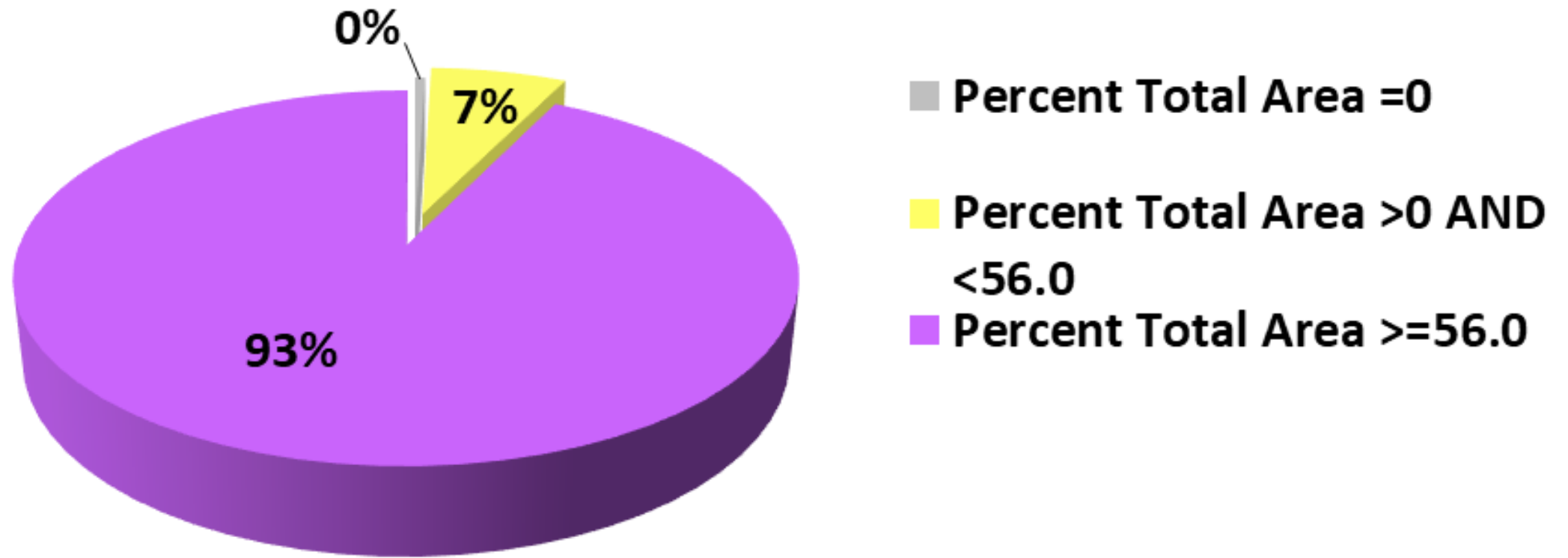
GRASP® Gap Analysis  
Target: 5-6 components

- No Access within 1-mile
- Below Target
- Meets Target

# GRASP® Neighborhood Access



## **% of Population with Neighborhood Access to Outdoor Recreation**

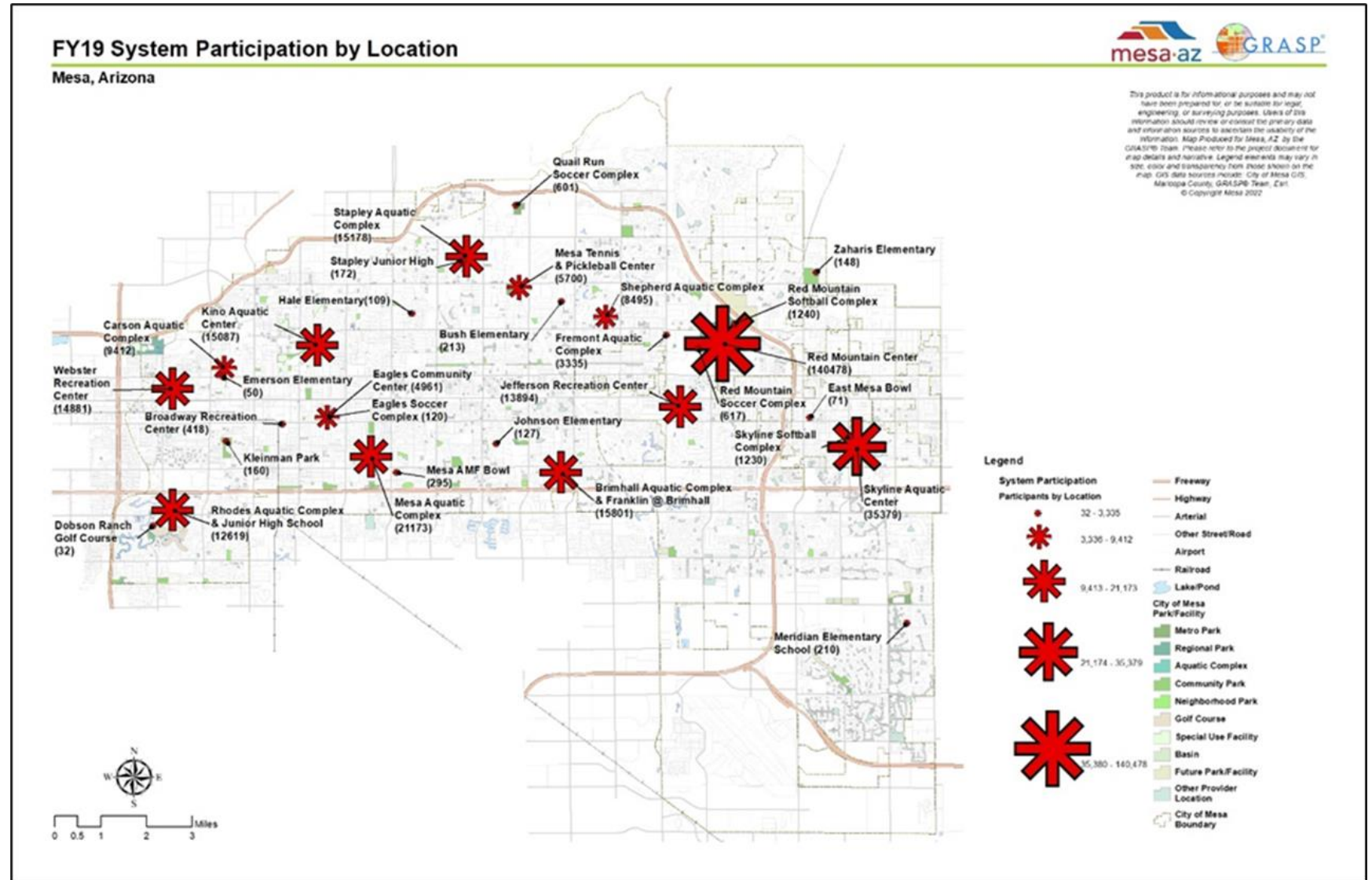




1,941  
Programs

27,583  
Registered  
Participants

299,295  
Drop-in Users





	Program Count	Sum of Total Enrolled	Max Enrollment	Fill Rate	Waitlist	Revenue
Adaptive	41	1,505	1706	86%	40	\$81,890
Aquatics	1,358	11,997	15,390	78%	462	\$447,604
General Enrichment	196	1,600	3,905	41%	25	\$21,323
School Break	105	2,422	3,411	71%	98	\$135,746
Sports	241	10,059	9,732	83%	17	\$292,018
Grand Total	1,941	27,583	34,144	81%	642	\$978,590



Location	Drop-in Use
Brimhall Aquatic Complex	13,533
Carson Aquatic Complex	8,640
Eagles Community Center	4,140
Fremont Aquatic Complex	2,190
Jefferson Recreation Center	13,401
Kino Aquatic Center	12,846
Mesa Aquatic Complex	19,896
Mesa Tennis & Pickleball Center	4,331
Red Mountain Center	<b>139,136</b>
Rhodes Aquatic Complex	11,566
Shepherd Aquatic Complex	7,659
Skyline Aquatic Center	33,400
Stapley Aquatic Complex	14,184
Webster Recreation Center	14,373
Total	299,295



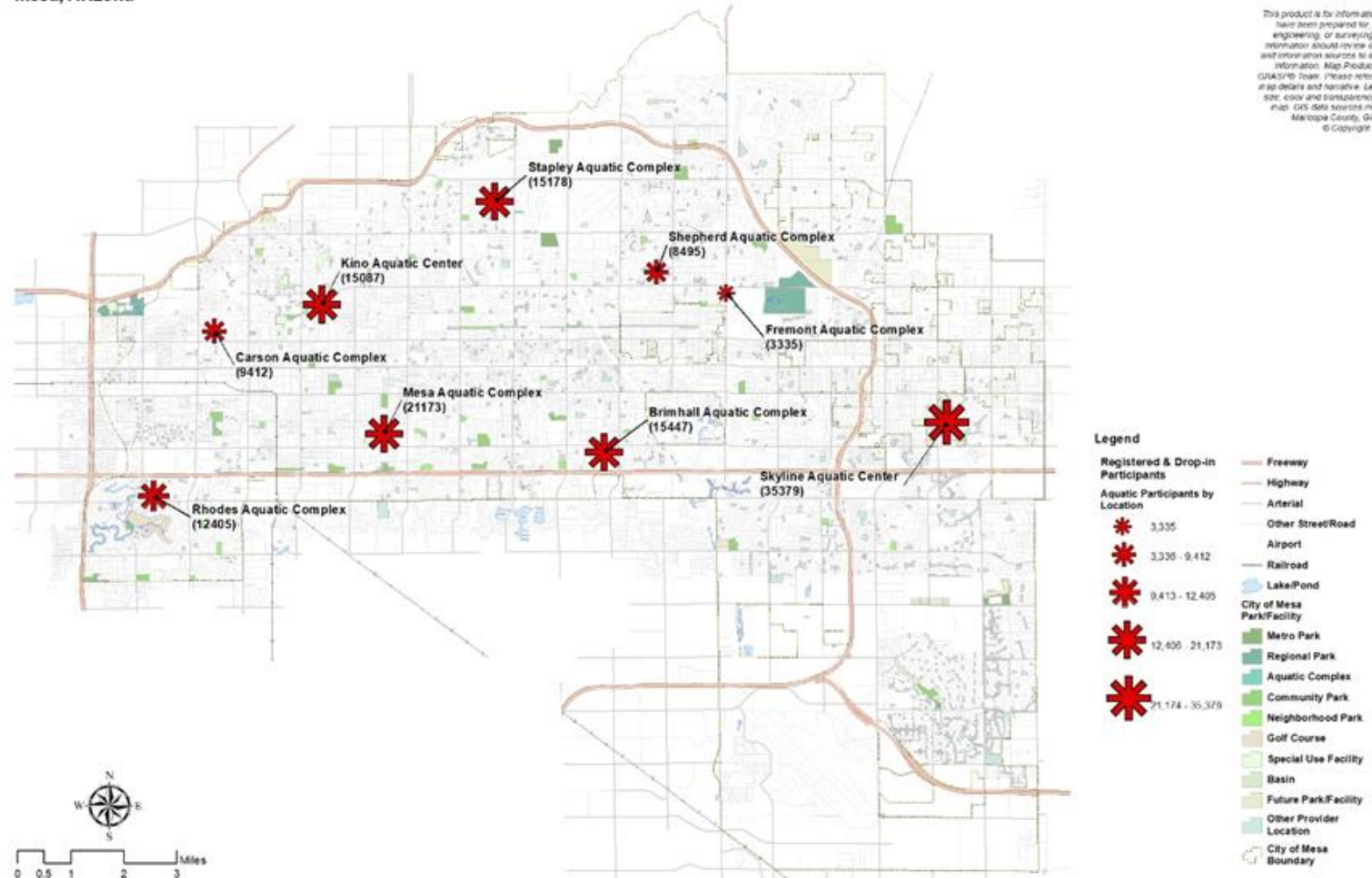
1,358  
Aquatic Programs

11,997  
Registered  
Participants

123,914  
Drop-in Users

## FY19 Aquatic Registered and Drop-in Participation by Location Mesa, Arizona

This product is for informational purposes and may not have been prepared for or be suitable for legal, engineering, or surveying purposes. Users of this information should review or consult the primary data and information sources to ascertain the validity of the information. Map Produced for Mesa, AZ by the GRASP Team. Please refer to the project document for map details and narrative. Legend elements may vary in size, color and transparency from those shown on the map. GIS Data sources include: City of Mesa GIS, Maricopa County, GRASP Team, Esri.  
© Copyright Mesa 2022



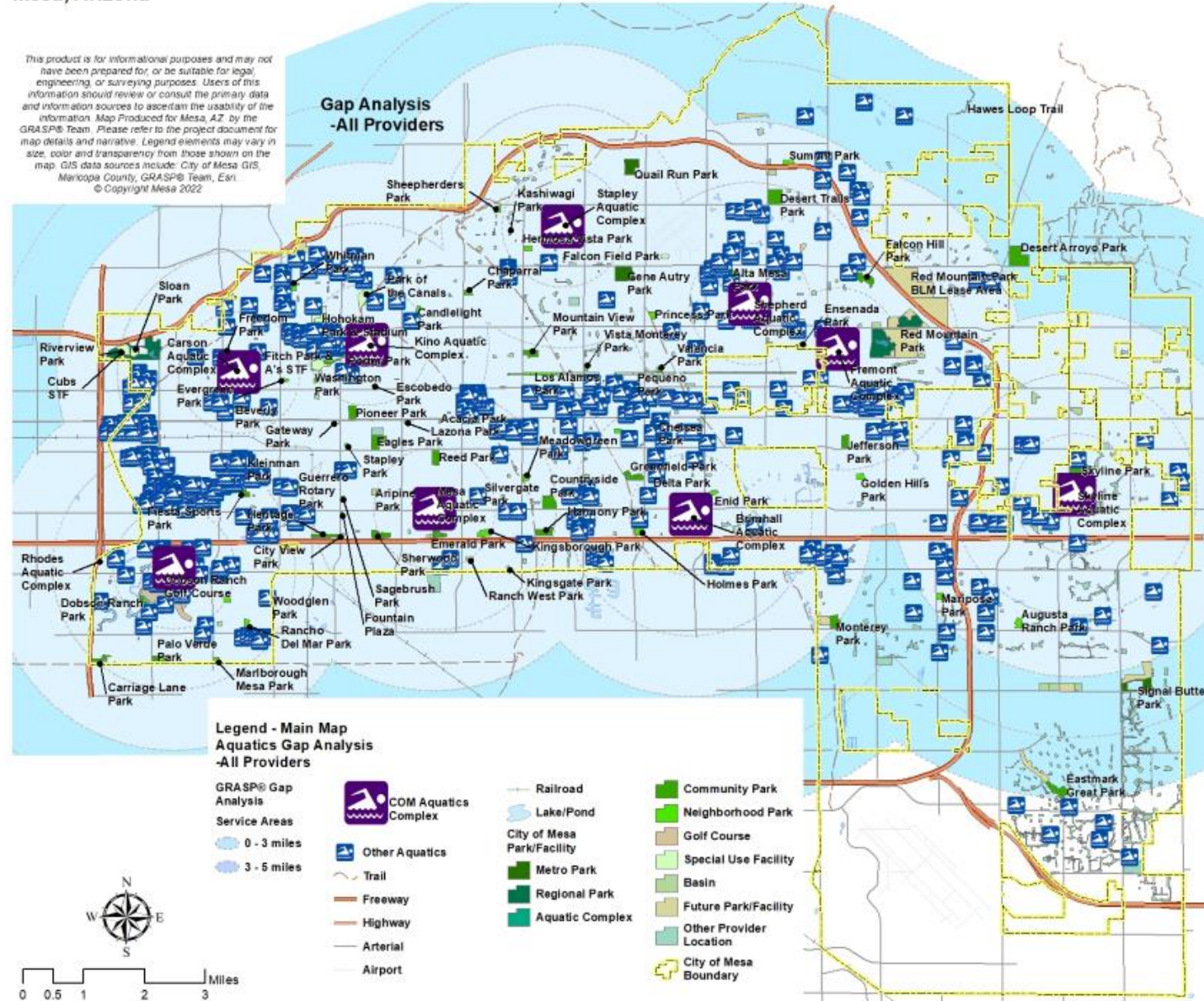


# Aquatics Access

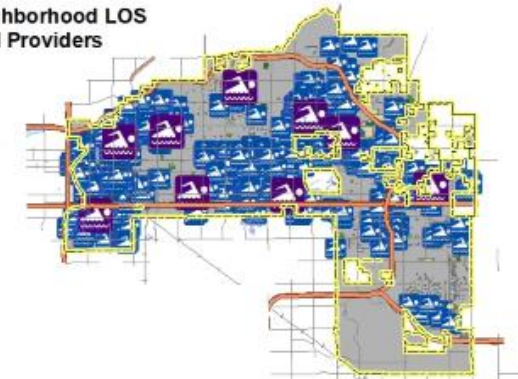
Mesa, Arizona

This product is for informational purposes and may not have been prepared for, or be suitable for, legal engineering, or surveying purposes. Users of this information should review or consult the primary data and information sources to ascertain the usability of the information. Map Produced for Mesa, AZ by the GRASP® Team. Please refer to the project document for map details and narrative. Legend elements may vary in size, color and transparency from those shown on the map. GIS data sources include: City of Mesa GIS, Maricopa County, GRASP® Team, Esri. © Copyright Mesa 2022

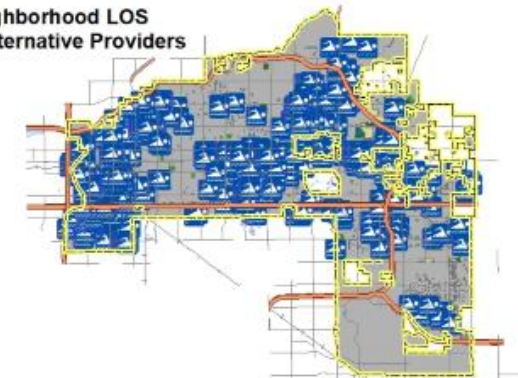
## Gap Analysis -All Providers



## Neighborhood LOS -All Providers



## Neighborhood LOS -Alternative Providers



## Neighborhood LOS -Mesa Only





# Comparative Analysis

338.5

FTE Count

270

Median FTE count  
for communities  
of half a million

255

Parks and  
Recreation FTE's

	Mesa FY22 FTE Distribution	Distribution	National Median FTE Distribution	National Distribution	Variance
Parks and Facilities	77	23%	121.5	45%	-44.5
Recreation Services	143.8	42%	83.7	31%	60.1
Administration	29.8	9%	48.6	18%	-18.8
Capital Development	4.5	1%	8.1	3%	-3.6
Other	83.4	25%	8.1	3%	75.3
Total	338.5	100%	270	100%	68.5



	Mesa, Arizona	Arlington, Texas	Aurora, Colorado	Henderson, Nevada	Kansas City, Missouri	Tucson, Arizona	Long Beach, CA
Population	519,384	389,386	376,727	318,668	508,664	561,126	466,742
Total number of full-time equivalent employees (FTEs)	338	278	383	388	383	433	427
FTE's per 10,000 Population	6.5	7	10	12	8	8	9.1

The 2021 NRPA Agency Review suggests that a typical agency with a population over a half-a-million would need 270 total FTEs, which is 5.4 FTE per 10,000 residents.

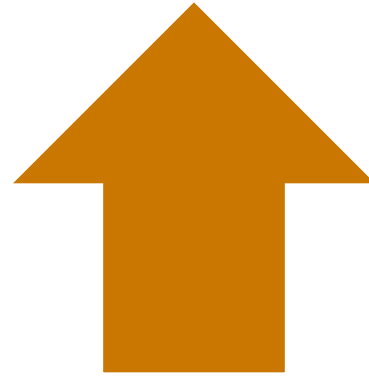


## Comparative Analysis

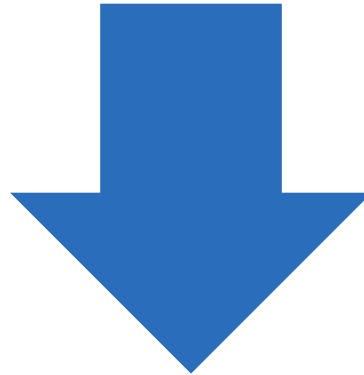
**\$40.8 million**  
Operating Budget

**\$4.2 million**  
Annual Revenue

**19.8%**  
Cost Recovery  
*Typical agency cost  
Recovery 22.9%*



Median Per  
Capita Spending  
\$43.05



Mesa Per Capita  
Spending  
\$41.49





Next Steps



Questions



Thank you

